

C & tan Automatic Measuring Set Model : DAC-ASM-7



DAC-ASM-7 has been designed to perform dielectric dissipation factor ($\tan \delta$) measurement in wide ranges.

Capacitance : 100pF ~ 10 μ F / $\tan \delta$: 0 ~ 100%

Test Voltage can be supplied from AC100V to 12kV. DAC-ASM-7 can measure grounded or ungrounded specimen such as generator, motor, transformer and Insulating Materials precisely with CT & Cs Box built-in High Voltage Current Transformer and Standard Capacitor.

Application Generator, Motor, Cable, Transformer, Capacitor, Insulating Materials

Feature Capacitance : 0.1nF ~ 10 μ F Test Voltage AC100V ~ 12kV
Internal Standard Capacitor (CT&Cs BOX)
Ground Specimen (GST) or Ungrounded Specimen (UST) under test can be selected.

C & tan AUTOMATIC MEASURING SET

Model : DAC-ASM-7

SPECIFICATIONS

Test Voltage : AC100V ~ 12kV 50/60Hz (HV testing power supply is not included)

Test Range : Capacitance 0.1nF ~ 10 μ F

tan 0 ~ 100%

Resolution : Capacitance 0.1pF (1nF Range)

tan 0.001% (2% Range)

Accuracy : Capacitance ± (1%Rdg+2digit)

± (5%Rdg+5digit) 1nF or less

:tan /P.F ± (0.01%+3%Rdg+2digit)

± (0.03%+5%Rdg+2digit) 1nF or less

(however, resolution is 0.01% on GST mode.)

Interface : GP-IB

Power Source : AC100V ~ 240V ± 10% 50/60Hz

Size & Weight : Main Unit (DAC-ASM-7)

· W430 * H199 * D385(mm) 15kg

: CT&Cs BOX(DAC-CCB-7)

· W400 * H320 * D260(mm) 20kg

Accessory : 1) Measuring Cable (GST, UST) 1 pc each

2) Dedicated Connecting Cables 2pcs

3) AC Cord 1pc

4) Grounding Cable 2pcs

5) Storage Bag 1pc



CT&Cs BOX (DAC-CCB-7)

Precise current transformer and standard capacitor are built-in DAC-CCB-7. Error of capacitance and tan are input in CPU as compensated values to measure a true value.

HV CT : Rated Current

10 μ F terminal 50A / 1 μ F Terminal 3A

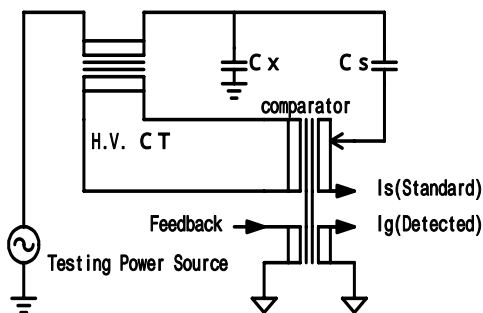
(on continuous measurements 1/10 of rated current.)

Cs : Capacitance 1000pF ± 10%

tan 0.05% or less

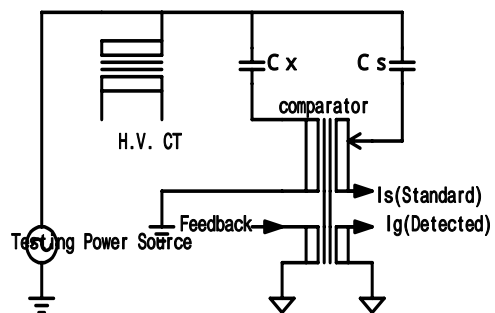
BLOCK DIAGRAM

GROUNDING SPECIMEN (GST Measurement)



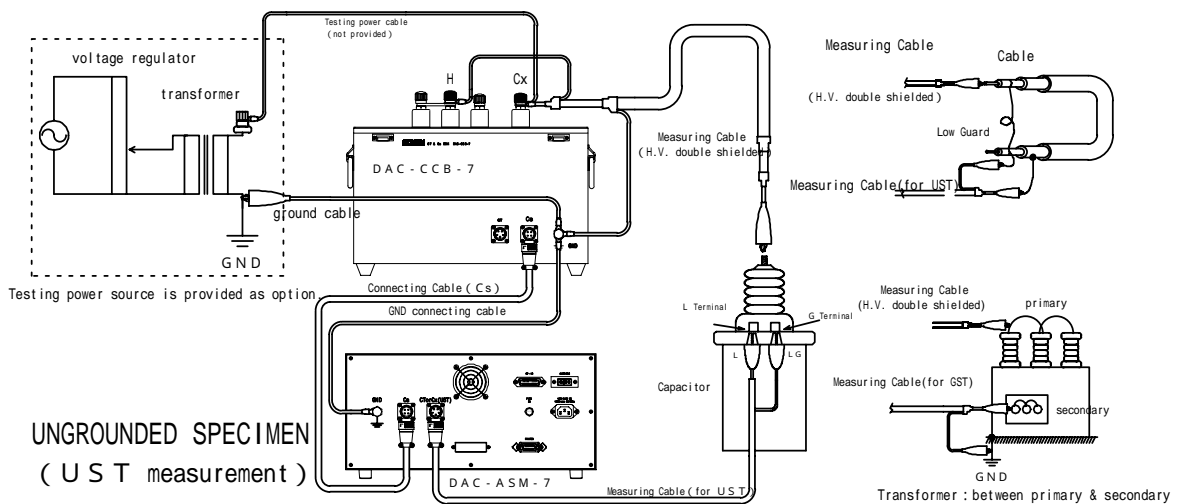
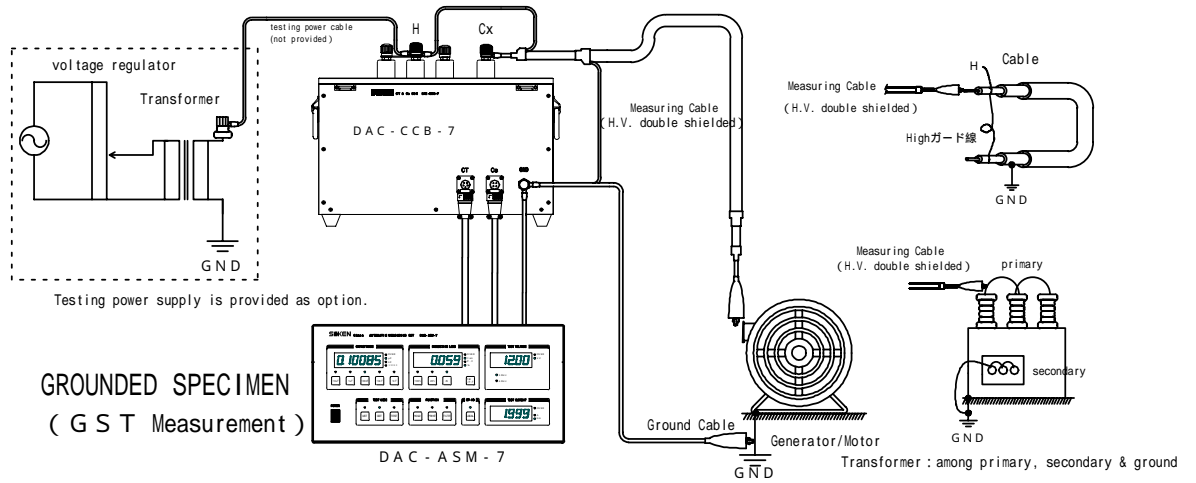
GST: Grounded Specimen Test

UNGROUNDING SPECIMEN (UST Measurement)

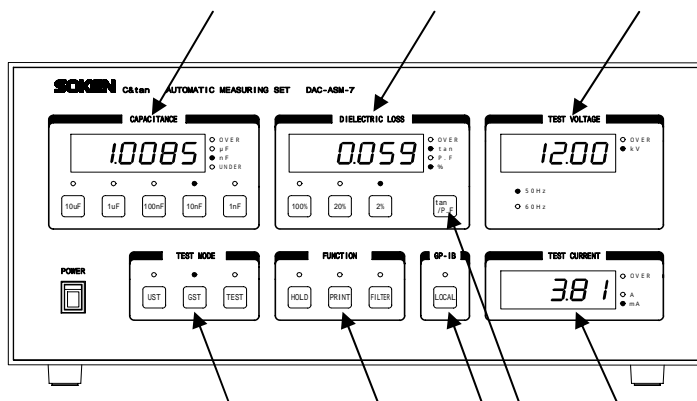


UST: Un-grounded Specimen Test

CONNECTING DIAGRAM



EXPLANATION OF THE PANEL



- Capacitance
- Dissipation Power Factor ($\tan \delta$)
- Test Voltage
- Test Mode (GST , UST)
- Print Key
- GP-IB Switch
- $\tan \delta$ / P.F. Selection
- Test Current Display

C & tan Automatic Measuring Set for High Voltage Equipments
(In a transferable cabinet with built-in Testing Power Supply) **Model : DAC-5035**

Specification (Testing Voltage 12kV / 1kVA)

Test Voltage : AC1kV ~ 12kV 50 / 60Hz
Test Range: Capacitance 100pF ~ 10uF(GST Mode)
 tan 0 ~ 100%
Resolution : Capacitance 10pF (10nF Range)
 tan 0.01% (10% Range)
Capacity : 1kVA
Power Source : Specified by customer 50 / 60Hz
Size & Weight : W570 * H1300 * D630(mm)
Approx. 120kg
Other : 1) Built-in Thermal Printer
 Specs 2) Alarm Lamp / Buzzer
 3) Transferable cabinet with wheels
Accessories : 1) Measuring Cables(GST, UST) 5M 2pcs
 2) Dedicated Connecting Cables 5M 2pcs
 3) AC Cord 5M 1pc
 4) Grounding Cable 5M 2pcs
 5) Storage Bag 1 pc



CT & Cs Box filled with SF6 gas for 30kV test DAC-CCB-6

Precise current transformer and standard capacitor are built-in DAC-CCB-6 together with SF6 Gas. It has been designed to use with C & tan Measuring Set DAC-ASM-7. Testing voltage is converted up to max. 30kV.

Test Voltage : AC30kV
Permissible Current : Cx < 0.1 μF tap 1A
 : Cx > 0.1 μF tap 50A
Test Frequency : 50 / 60Hz
Internal Standard
 Capacitor : Initial Capacitance 1000pF ± 10%
 : tan less than 0.05%
Usage Gas and Pressure : SF6 (0.2MPa)
Size : W347 x D347 x H617(mm)
Weight : Approx. 35kg



SOKEN SOKEN ELECTRIC CO., LTD.

〒182-0035 3-57-124, Kami-Ishihara, Choufu-City, Tokyo
TEL +81-(0)424-90-6929 FAX +81-(0)424-90-6807
WWW.SOKEN-JP.COM

Main Office • Factory
ISO9001Cert Obtained