



COMPANY CAPABILITIES



www.dynamicroatings.com

WELCOME

Dynamic Ratings is a technology-focused company designing and manufacturing innovative monitoring, control systems, sensors, advanced analytics, software tools, and communication solutions for electrical apparatus.

Our heritage is the core knowledge of the design and operation of the equipment we monitor and control. This drives our innovative analytics and monitoring techniques which improve asset performance, improve substation reliability and provide annual maintenance savings opportunities.

Committed to Serving Customers

With over 4,000 systems installed globally in Africa, Asia, Australia, Canada, Europe, Mexico, Latin and South America, the Middle East, New Zealand, and the United States, Dynamic Ratings is a world leader in the monitoring and control of power transformers and electrical power apparatus.



Serving Customers at more than 5,000 Global Locations



OUR HISTORY



Dynamic Ratings is a wholly owned subsidiary of the Wilson Transformer group of companies, which is the leading manufacturer of power and distribution transformers in Australia, with manufacturing joint ventures in Malaysia and Saudi Arabia.

Dynamic Ratings developed an industry leading transformer monitoring, control and communication system which has been progressively developed and now has more than 4,000 installations worldwide.

Dynamic Ratings originated in the early 1990s when WTC developed a PLC-based transformer management system. Realizing the limitations of PLCs for this application, WTC developed a more robust hardware for use in electrical substations. The evolution of this product platform remains ongoing.

Dynamic Ratings expanded its range of products and services in 2009 with the acquisition of Electrical Diagnostics Innovations, Inc. (EDI) from Brooklyn Park, Minnesota. This addition compliments Dynamic Ratings' product line by providing tools for advanced transformer bushing monitoring and partial discharge monitoring in transformers, motors, generators, switchgear, and cables.

Early in 2011, Dynamic Ratings acquired the power line carrier technology from Wisconsin-based Telkonet. This product line provides secure communications over existing cables, which has applications for communications systems within switchyards and substations for generation, transmission and distribution assets.

Since establishment, Dynamic Ratings has continued its growth via organic and inorganic means, with a clear vision to be a world leader in the field of monitoring, control and communications for electrical power apparatus.

Dynamic Ratings serves customers in global marketplaces from strategic locations and via authorized Agents and representatives.

The Dynamic Ratings Asia office is located in Glen Waverley, VIC Australia. United States offices are located in Denver, CO, Piqua, OH, with headquarters in Sussex, WI. We staff a Canadian office in Surrey, BC, a European office in Cheshire, UK, and a Latin American office in Cuernavaca, Mexico.

COMMITTED TO QUALITY

Our mission is to engineer and manufacture quality, innovative, continuous on-line solutions to monitor electrical apparatus which improve generation, transmission and distribution systems reliability, enable smart grid solutions, reduce operating expenditures and provide a real time view of equipment condition.

Our quality management systems are integral to all areas of our business. We are an ISO 9001:2008 certified company.



Vision & Mission Statements

Our Vision:

Dynamic Ratings is passionately committed to improving the reliability, operational cost and safety of our customers' electrical power assets.

Our Mission is to:

- Provide prompt and effective responses to customers
- Apply innovative approaches, products and services to solve technical and business challenges, enabling our customers to achieve their goals
- Continually develop and improve our people, processes, products and services
- Expand and enrich our team with industry experienced professionals
- Share our industry knowledge and experience.

We Demonstrate Core Values of:

Safety - by

- Always putting "Safety first"
- Complying with internal and external safety procedures and systems
- Maintaining a duty of care for oneself and others.

Quality - by

- Using the ISO quality management system to benefit our customers.

Integrity - by

- Building trusting relationships through open communication
- Demonstrating honesty, trust and mutual respect
- Basing decisions on what is best for the customer.

Innovation - by

- Continually investing in the development of improved customer solutions.

Unity - by

- Supporting each other and leveraging the diverse skills of our team
- Encouraging self-improvement
- Fostering an environment where employees take ownership and make decisions
- Putting the success and achievements of the team first.



Quality Policy

Dynamic Ratings management and employees are passionately committed to improving the reliability, operational cost and safety of our customers' electrical power assets. The goal is to ensure that our products and services meet or exceed quality expectations.

Dynamic Ratings, via a Quality Management System that focuses on establishing and continually improving our procedures and processes, totally supported by management and employees, shall ensure:

- (a) We are always working within the requirements of the ISO 9001 Quality Management System as well as other regulatory requirements to establish and maintain quality objectives
- (b) We are improving our business by continually reviewing the effectiveness of the Quality Management System
- (c) We are conducting Regular Management reviews to assess our progress toward our business goals.
- (d) We are continually training our employees, including the communication and understanding of the Quality Management System
- (e) We listen to employees, provide opportunities for growth and encourage proactive behavior
- (f) We use a standardized approach for all our processes within the business
- (g) We actively participate in industry bodies and in industry events
- (h) We listen to the voice of the customer through regular communication.

Tony Pink
General Manager and Chief Operating Officer

PD-04 Quality Policy
April 27, 2016

Focused on Health and Safety

Globally, we work to ensure that all employees, contractors, and visitors go home safely at the end of their working day. Our health and safety policy is a proactive system to prevent, minimize, and eliminate risks.

INDUSTRIES SERVED

Utilities

- Distributed Generation
- Transmission
- Distribution
- Power Plants
 - Coal
 - Hydro
 - Nuclear
- Renewable Energy
 - Wind Farms
 - Solar Farms

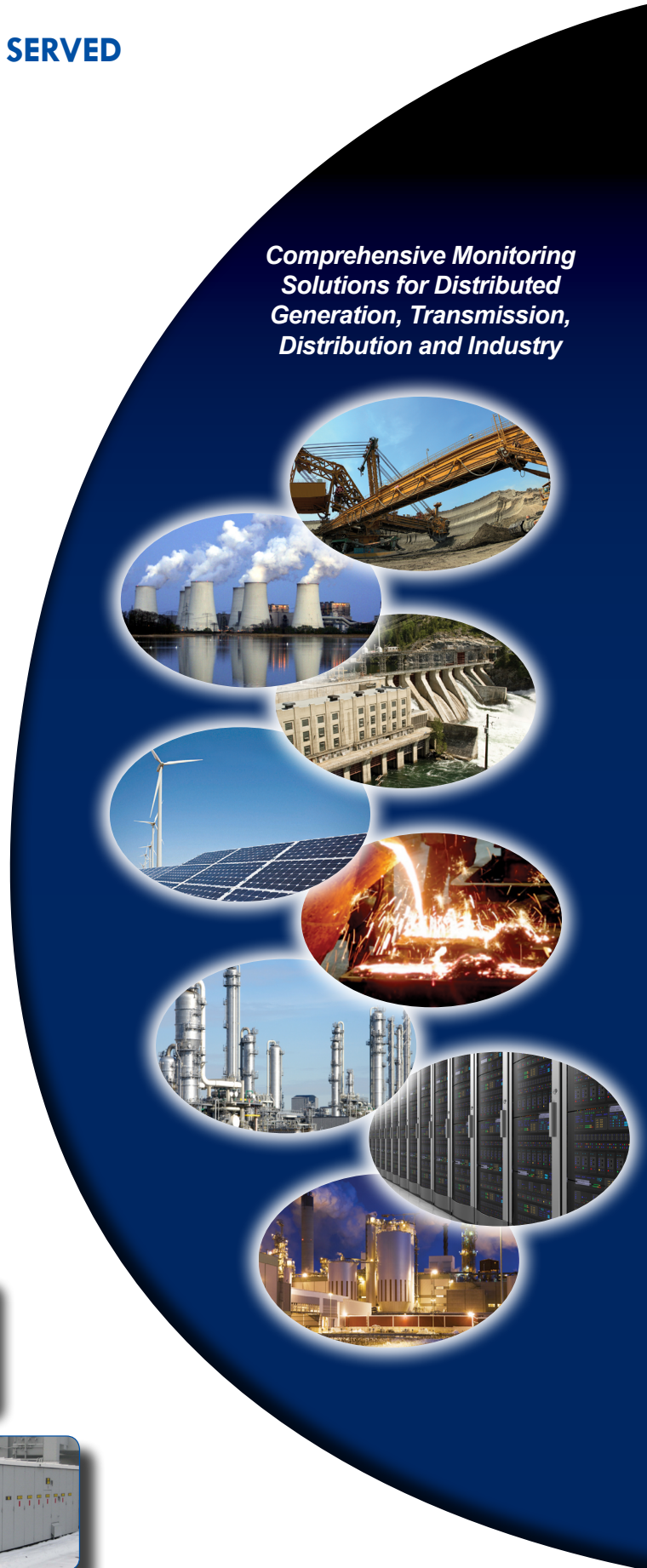
Industrials

- Mining
- Petro Chemical
- Data Center/IT
- Steel and Metal Production

Original Equipment Manufacturers

- Transformers
- High Voltage Breakers
- Motor, Including VFDs
- Switchgear
- Hydro and Turbo Generators
- Connected Bus & Duct or Cable End Users

*Comprehensive Monitoring
Solutions for Distributed
Generation, Transmission,
Distribution and Industry*

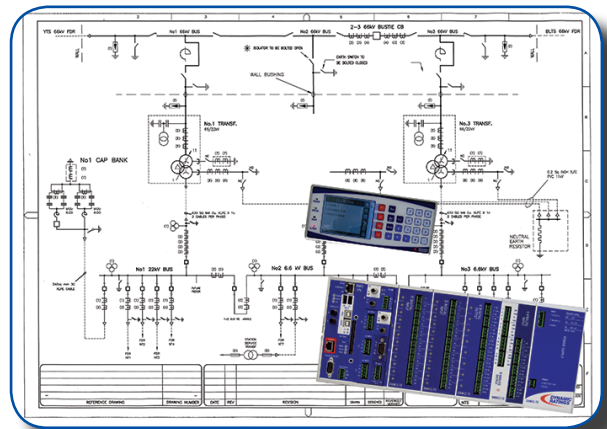
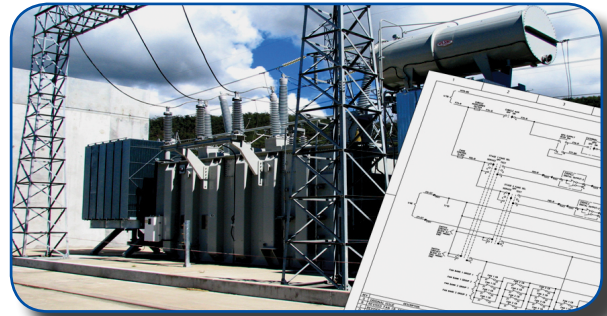


OUR GOAL: PROVIDE PROMPT, CUSTOMER-FOCUSED SERVICES

Engineering Services Include:

- Application planning
- Solutions design
- Engineered to order systems
- Development of technical specifications
- Drawing and documentation packages
- Quality production
- Third party device integration
- Factory testing
- Commissioning
- Full or witnessed installation
- Training
- Ongoing support and field services
- Global technical support, 24/7

Engineered services apply to new, retrofit and systems upgrades to ensure our customers' systems meet or exceed the intended objectives.



Design Engineering

Each system is engineered for the individual transformer and includes the following:

- Customized drawings for the each project
- Pre-configured or customer configurable hardware options
- Pre-tested configurations including pretesting of interconnected devices
- Customized tests and maintenance guides

Detailed Testing

Each system is fully tested at the factory to verify correct configuration. All control, alarm and display functions are tested to verify that the setup is functioning as designed.

Software Engineering

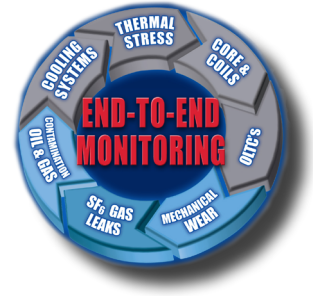
Each system is configured to ensure that the functionality satisfies the customer's technical specification and meets the end user's objectives. The configuration of the control incorporates specific details of the transformer to include:

- Nameplate detail
- Thermal design or actual heat run data
- Cooling system
- Wiring diagrams
- Outline drawing

These design criteria are used to provide a custom configuration specifically suited to each application.

END-TO-END MONITORING SOLUTIONS

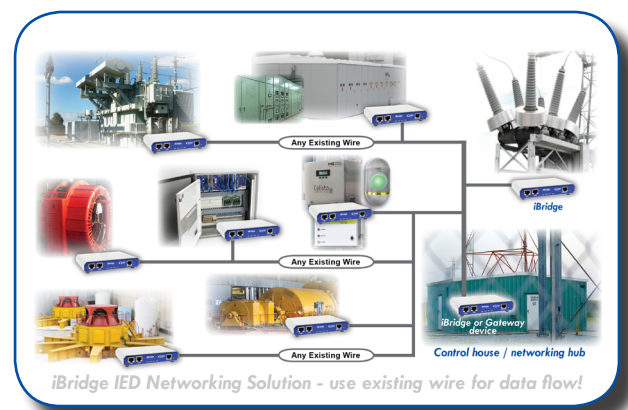
The Company's product suite encompasses end-to-end solutions for the monitoring and control of power transformers, monitoring of power generators, electric motors, high voltage circuit breakers, switchgear, cables and electrical fault limiter systems.



End-to-End Monitoring of:

- Transformers
- Bushings
- Cables, Terminations
- Connected Bus Duct
- Insulation Systems
- Circuit Breakers
- Hydro/Turbo Generators
- Motors
- Switchgear

Our iBridge substation communication products enable cost effective, rapid Intelligent Electronic Device (IED) communications deployment in harsh substation and industrial environments.



Flexible and Modular Transformer Monitors



DR-C50 Series
Customer Configurable



DR-E Series
Engineered to Order



Controls:

Voltage and Cooling

Monitors:

Temperatures, Cooling, OLTC

Built-in Analytics:

Fan/Pump, Condensation, Contact Wear, Delta-T, OLTC, Hunting, OLTC Motor Energy (Joules), Active Moisture Modeling, Winding Hotspot, Interfaces with DGA and other IEDs.

Our heritage is unmatched in years of engineering experience and a core knowledge of the design and operation of our customers' equipment.

We partner with customers to provide advanced design and precisely implemented asset health monitoring, control and communication systems. Benefits include:

Reliability Improvement

With improved on-line condition based data, users receive condition based alarms when problems first arise allowing problems to be detected early and appropriate actions to be taken before problems escalate.

Maintenance Savings

The advanced analytics within the monitoring system filters through the condition data to automatically identify issues requiring maintenance attention. This allows the Operations & Maintenance crews to focus on resolving problems rather than consuming resources to manually collect data for off-line condition assessment and provide an optimal platform for condition based maintenance.

Realizing True Capacity

The real-time measurement of operational parameters allows the dynamic rating of the transformer to be determined and optimal performance realized.



Asia / Africa / United Kingdom

+61 3 9574 7722

sales.asia@dynamicratings.com

Americas / Europe / India / Middle East

+1 262 746-1230

sales.us@dynamicratings.com

www.dynamicratings.com