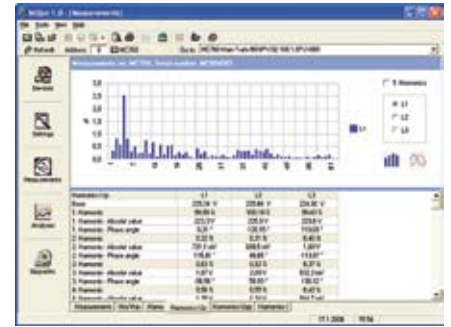




Iskra MIS, d.d.

# MT 5xx/UMT 5xx MULTIFUNCTIONAL "ALL IN ONE" MEASURING TRANSDUCERS – POWER CLASS 0.2



- VARIOUS COMMUNICATIONS: ETHERNET, USB, RS232/RS485
- PROTOCOLS: MODBUS, DNP3
- TRANSFER RATE UP TO 115,200 BIT/SEC



### FEATURES:

- WIDE VARIETY OF PROGRAMMABLE INPUTS/OUTPUTS, MAX. 4 I/O
- PERMANENT ANALYSIS OF POWER QUALITY – ACCORDING TO EN 50160
- RECORDS IN INTERNAL 8 MB MEMORY FOR THE LAST 7 YEARS
- REMOTE DISPLAY, OPTIONAL
- USER FRIENDLY AND POWERFUL SETTINGS SOFTWARE MIQEN
- DIN RAIL MOUNTING
- WIDE FREQUENCY RANGE (16 2/3 UP TO 400 Hz)
- USA AND EUROPEAN STYLE TERMINAL CONNECTIONS



# FEATURES

Instrument description	Multifunction Transducer	Network Recorder	Network Analyzer
ANSI type	UMT 540	UMT 550	UMT 560
DIN type	MT 540	MT 550	MT 560
<b>Hardware Configuration</b>			
Accuracy class (typical, of reading) %	0.2	0.2	0.2
Power supply	Uni-LO / Uni-HI	Uni-LO / Uni-HI	Uni-LO / Uni-HI
Energy counters	4	4	4
Real time clock	•	•	•
Remote display connection*	•	•	•
FLASH Memory size	-	8 Mb	8 Mb
Autorange Current	•	•	•
Autorange Voltage	•	•	•
<b>Input Range</b>			
Current - In=5A, max.12A	•	•	•
Voltage - Un=500V L-N, max. 750 V L-N sin	•	•	•
Frequency - 16 2/3 Hz or 45 to 65 Hz or 300 Hz or 400 Hz	•	•	•
<b>Communication</b>			
Communication ports	1 Standard + 1 Optional *	1 Standard + 1 Optional *	1 Standard + 1 Optional *
Comm. Type: Serial (RS485 + RS232)/Ethernet/USB/Ethernet & USB**	•/•/•/•	•/•/•/•	•/•/•/•
Comm. Protocol: Modbus (RTU, TCP) and DNP3	•	•	•
<b>Inputs/Outputs</b>			
I/O 1: AN / DI / DO / PO / TI / AL	○/○/○/○/○/○	○/○/○/○/○/○	○/○/○/○/○/○
I/O 2: AN / DI / DO / PO / TI / AL	○/○/○/○/○/○	○/○/○/○/○/○	○/○/○/○/○/○
I/O 3: AN / DI / DO / PO / TI / AL	○/○/○/○/○/○	○/○/○/○/○/○	○/○/○/○/○/○
I/O 4: AN / DI / DO / PO / TI / AL / COM2*	○/○/○/○/○/○/○	○/○/○/○/○/○/○	○/○/○/○/○/○/○
<b>Available Functions</b>			
Programmable refresh time (Communication)	•	•	•
MD calculation (TF, FW, SW)	•	•	•
Tariff Clock	•	•	•
Cost management	•	•	•
Programmable Alarms	32	32	32
Alarms Recording	-	•	•
Measurements Recording	-	•	•
Power supply quality EN50160	-	-	•
PC Software	MiQen	MiQen	MiQen
<b>Available Measurements</b>			
Actual values: U, I, P, Q, S, PF, PA, f, φ	•	•	•
Energy	•	•	•
Maximum demands	•	•	•
Minimum values: U, I, P, Q, S, PF, PA, f, φ	•	•	•
Maximum values: U, I, P, Q, S, PF, PA, f, φ	•	•	•
THD	•	•	•
Harmonics	up to 31 <sup>st</sup>	up to 31 <sup>st</sup>	up to 63 <sup>rd</sup>

\* The optional communication port (COM2) excludes the remote LED display connection and supports only RS485 serial communication type through the 4th I/O connector slot

\*\* With some limits (see User's Manual MT/UMT 5xx)

#### Legend:

- standard feature
- optional feature
- / or
- AN – analogue output
- DI – digital input
- DO – digital output
- PO – pulse output
- TI – tariff input
- AL – alarm output
- TF – thermal function
- FW – fixed window
- SW – sliding window

Note: Products on this leaflet available in the second half of the year 2007.



**Iskra MIS, d.d.**

Ljubljanska cesta 24a,  
SI-4000 Kranj, Slovenia  
Phone: +386 4 237 21 12,  
Fax: +386 4 237 21 29  
E-mail: info@iskra-mis.si,  
www.iskra-mis.si